

# #401-2525 QUEBEC STREET

## VANCOUVER

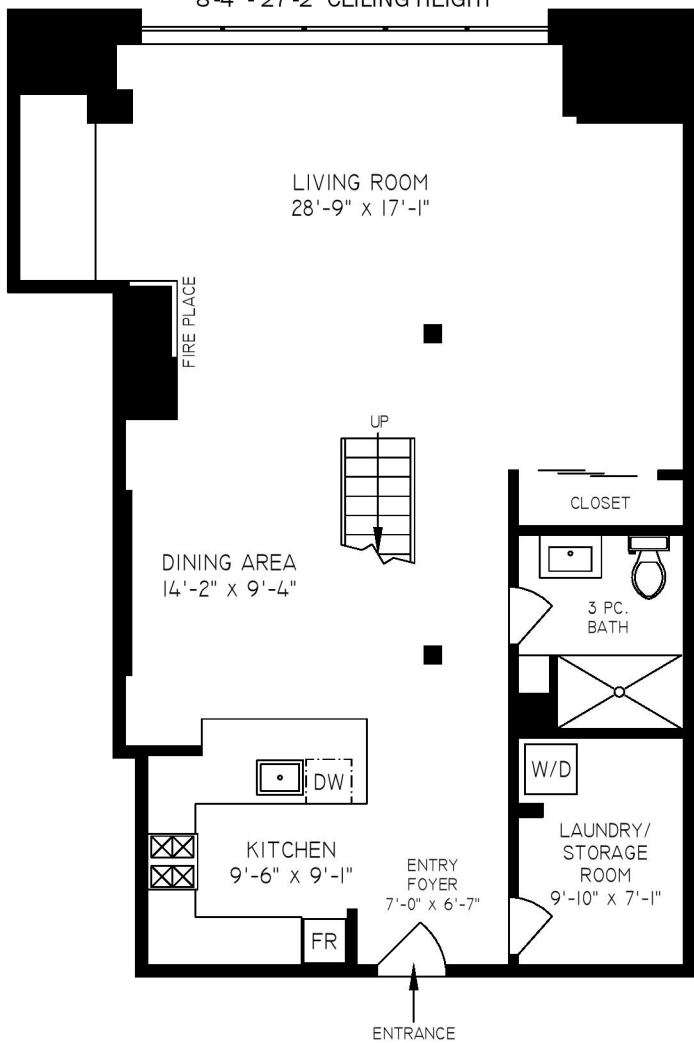
### 1631 SQ. FT.

8'-4" - 27'-2" CEILING HEIGHT



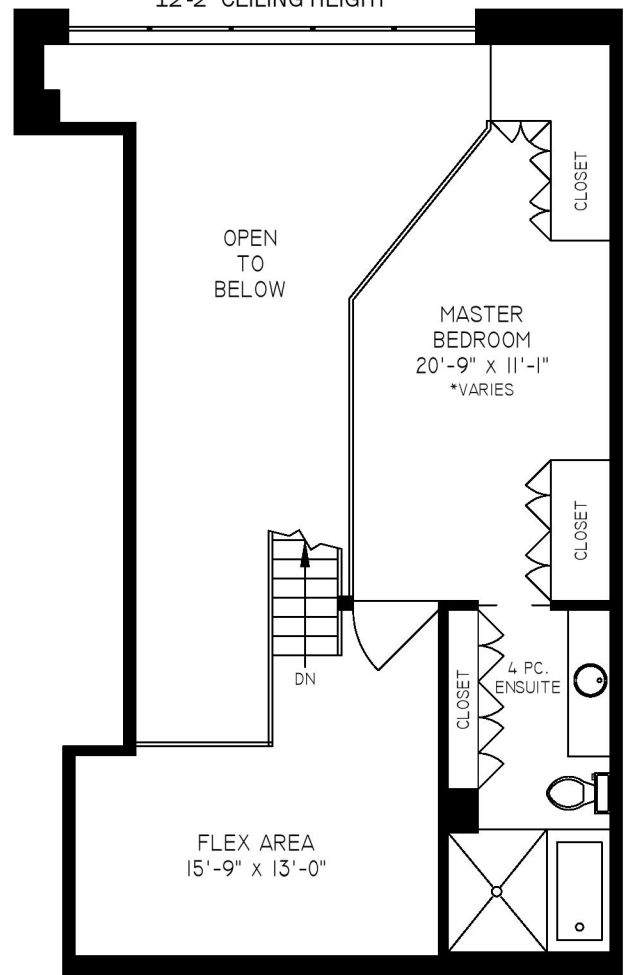
### MAIN FLOOR 1066 SQ. FT.

8'-4" - 27'-2" CEILING HEIGHT

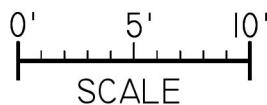


### UPPER FLOOR 565 SQ. FT.

12'-2" CEILING HEIGHT



FLOOR	AREA (SQ. FT.)
	FINISHED
MAIN	1066
UPPER	565
<b>TOTAL</b>	<b>1631</b>



THE REPRESENTED FLOOR PLANS ARE NOT SUITABLE FOR CONSTRUCTION/ARCHITECTURAL PURPOSES. EVERY EFFORT HAS BEEN MADE TO REPRESENT ALL DIMENSIONS ACCURATELY. E&O INSURED. FINAL SQUARE FOOTAGE MAY BE OBTAINED FROM STRATA PLAN.